

Red Sea Global

CASE for Regenerative Development

ITU Future Networked Car Symposium, Doha 6/10/2023

Content

- 01 Red Sea Global: who we are
- 02 Mobility: scope of operations
- 03 Electrification
- 04 Connectivity
- 05 EV Charging Infrastructure
- 06 Shared Mobility
- 07 Autonomous Trials

01 | Red Sea Global: who we are



Red Sea Global

- Red Sea Global (RSG) was established in 2018 as a closed joint stock company wholly owned by the Public Investment Fund (PIF) of Saudi Arabia
- Its purpose is to drive the development of The Red Sea and AMAALA, two regenerative tourism destinations along Saudi Arabia's west coast
- The Red Sea is 500km north of Jeddah, between the towns of AlWajh and Umluj, with AMAALA a further 200km north
- Contracts of over \$32bn awarded to date
- Over a dozen other projects in planning along the Red Sea coast

The Red Sea & AMAALA



Phase I

- 5 Islands developed
- 2 Inland sites
- 16 hotels – 2,875 keys (including 359 condo hotel units)
- 75 Golf Villas
- Supporting infrastructure and airport

Overall Development

- 22 Islands developed
- 6 Inland sites
- 50 hotels – ~8,000 keys (including ~900 condo hotel units)
- ~1,300 Residential units
- Additional supporting infrastructure



- 1 Triple Bay (5 Coastal Sites)
- 6 hotels – 929 keys (including 104 condo hotel units)
- Supporting infrastructure

- 3 Masterplans developed (17 Coastal Sites and 3 Sites on The Island)
- 30 hotels – ~3,000 keys (including ~400 condo hotel units)
- ~900 Residential Units
- Additional supporting infrastructure



02 | Mobility: scope of operations

In-house Mobility Transportation Modes

Land

Land Mobility

- Provides land operation and support services for The Red Sea and AMAALA.
- Responsible for fleet management, and to guarantee seamless guest experiences and uninterrupted operations.
- Also covers micro-mobility



Sea

Marine Mobility

- Best-in-class marine support to all The Red Sea & AMAALA operating departments.
- Provides marina services, asset management and operations of vessels to ensure uninterrupted guest and staff transfers



Air

Seaplane Mobility

- Air transportation for our guests
- First seaplane AOC issued in Saudi Arabia
- MoU for hydrogen fuel cell conversion of seaplanes



Passenger volumes (guests and staff)

	Opening	Phase 1	Completion
 Hotels	3	16	50+ resorts
 Guests	550	5940	>19,000
 Staff	800	7500	24,000
 Annual passenger trips from RSI	40,000	300,000	1m
 Annual trips between resort destinations	100,000	1.3m	4.5m



03 | Electrification

One of the world's largest battery storage facility

- Completed the installation of 760,000 solar panels and five solar stations for phase 1 of The Red Sea
- Supported by a 1,200MWh battery storage facility
- Destination is completely independent from the Saudi national grid making the power network not only the largest but also the first of its kind in the world
- The resort will be able to generate up to one million MWh of renewable energy per year
- Integrated into a destination-wide Smart Cities/Energy management platform

04 | Connectivity

Features

- **Sharing**
Tower sharing with other operators
- **Size**
Compact size
- **Natural harmony**
Exterior seamlessly blends with resort's natural beauty

The world's first net-zero-energy 5G network

- Powered by 100% green energy network
- Highest speed 5G connectivity in the region
- Designed using innovative 3D printing technology
- Inspired by the surrounding rock formations, the exterior aesthetic of the towers minimize visual impact
- Integral to both guest experience and resort wide operational activities

05 | EV Charging Infrastructure

The largest green EV charging network in GCC region

alfanar Signs a Framework Agreement with **Red Sea Global** for the Supply of **Electrical Vehicle Chargers**

- Also powered by 100% green energy
- A mixture of AC and DC chargers supplied by alfanar, the first local manufacturer to supply EV chargers in the Kingdom
- Fully OCPP compliant and connected by 5G network to a bespoke management platform, hosted at data centers in KSA
- Integration with Smart Energy platform
- Over 150 chargers commissioned to date, expanding to over 1000 units in next 12 months, including marine and airside locations

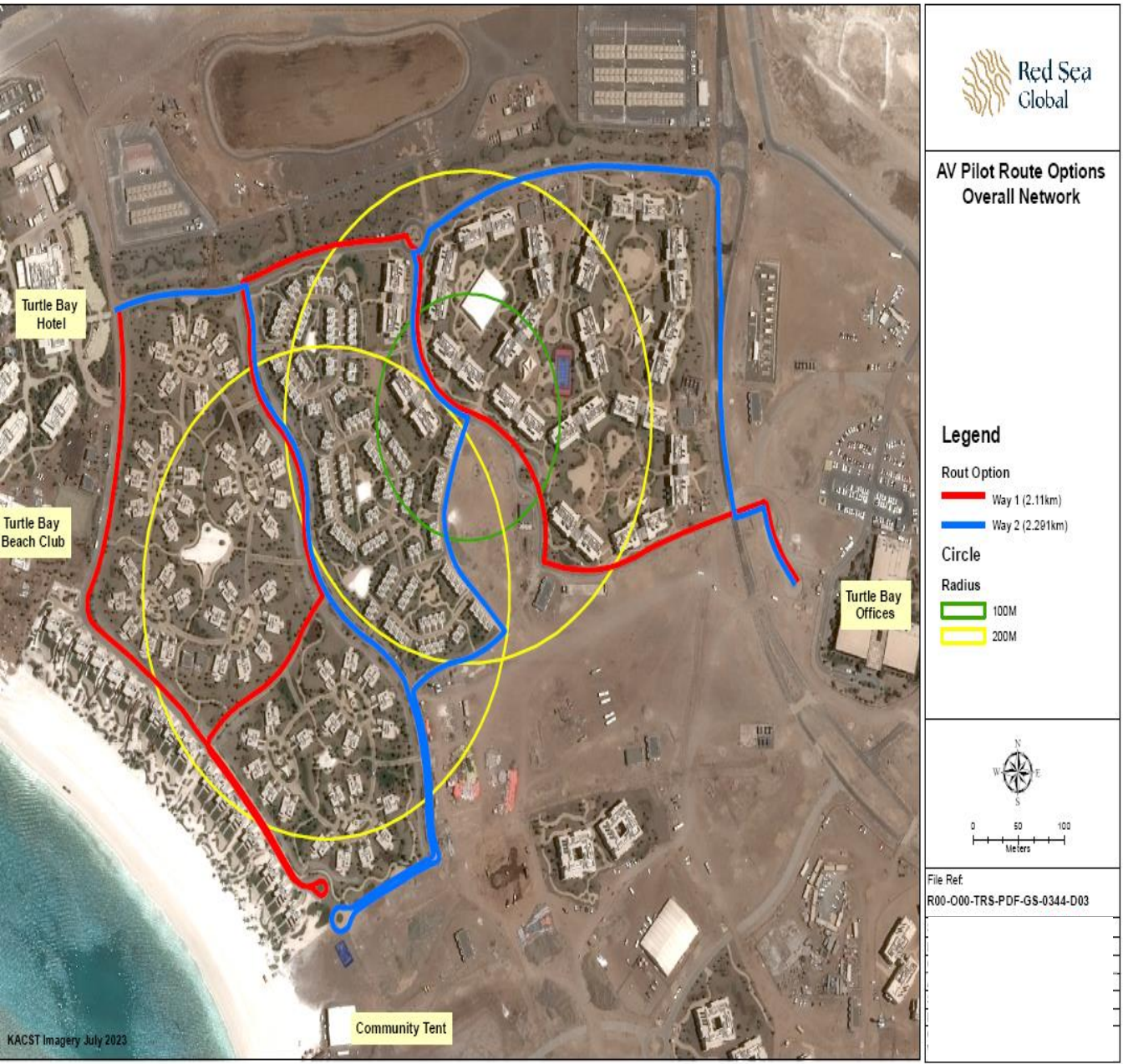
06 | Shared Mobility



A fully clean, green, emission-free shared transport network

- Guests will be transported in a fleet of zero-emission battery electric luxury vehicles.
- Initial chauffeur driven fleet comprises of 30 Lucid Air GT and over 50 Mercedes EQS
- Bus services will be provided by a fleet of luxury Yutong and Eurabus electric buses
- Baggage, security, airside operations and facilities management vehicles will also be fully electric when the resort is completed
- All vehicles have on-board telematics to monitor real time driver behaviour, charge status, fleet management and scheduling

07 | Autonomous Trials



Autonomous Trials

- Building blocks are in place – electrification, connectivity, road network and shared mobility
- Initial pilot for an electric staff shuttle service within the staff village to compliment existing buggy and cycling options
- To be followed by logistics trial expected to commence 2024 – laundry, staff F&B offer
- Based on learnings from shuttle trial, will explore a potential full-size electric bus service between Shura island, staff village and Red Sea International airport

